



**Mekong River Commission**

**Weekly Dry Season Situation Report in  
the Lower Mekong River Basin  
14 – 20 April 2026**

Prepared by  
The Regional Flood and Drought Management Centre  
21 April 2026

*The MRC is funded by contributions from its Member Countries and Development Partners, including Australia, Belgium, the European Union, Finland, France, Germany, Japan, Luxembourg, the Netherlands, Sweden, Switzerland, the United States and the World Bank.*

**Copyright © Mekong River Commission, 2026**

First published (2020)

Some rights reserved.

This work is the product of the Mekong River Commission Secretariat. While all efforts are made to present accurate information, the Secretariat does not guarantee the accuracy of the data included in this work. The boundaries, colours, denomination, and other information shown on any map in this work do not imply any judgement on the part of the MRC concerning the legal status of any territory or the endorsement or acceptance of such boundaries.

Nothing herein shall constitute or be considered to be a limitation upon or waiver of the privileges and immunities of the MRC, all of which are specifically reserved.

This publication may be reproduced in whole or in part and in any form for educational or non-profit purposes without special permission from the copyright holder, provided acknowledgement of the source is made and notification is sent to the MRC. The MRC would appreciate receiving a copy of any publication that uses this publication as a source. This publication cannot be used for sale or for any other commercial purpose whatsoever without permission in writing from the MRC.

**Title:** Weekly dry season situation report in the Lower Mekong River Basin for 14 – 20 April 2026.

ISSN: 1728-3248

Keywords: Monitoring/forecasting/weather/the Mekong/the Tonle Sap Lake

For bibliographic purposes, this volume may be cited as:

Mekong River Commission. (2026). *Weekly dry season situation report in the Lower Mekong River Basin for 14 – 20 April 2026*. Vientiane: MRC Secretariat.

Information on MRC publications and digital products can be found at

<http://www.mrcmekong.org/publications/>

**All queries on rights and licenses should be addressed to:**

Mekong River Commission

Documentation and Learning Centre

184 Fa Ngoum Road, Unit 18, Ban Sithane Neua, Sikhottabong District, Vientiane 01000, Lao PDR

Telephone: +856-21 263 263 | E-mail: [mrcs@mrcmekong.org](mailto:mrcs@mrcmekong.org) | [www.mrcmekong.org](http://www.mrcmekong.org)

# Content

- Content ..... 22**
- List of Figures..... 23**
- List of Tables..... 24**
- Key Messages ..... 25**
- 1 Introduction ..... 26**
- 2 General Weather Patterns ..... 27**
- 3. Rainfall and Water Level Monitoring ..... 28**
  - 3.1. Rainfall monitoring ..... 28**
  - 3.2. Water level monitoring ..... 30**
- 4. Flash Flood in the Lower Mekong Basin ..... 34**
- 5. Drought Monitoring in the Lower Mekong Basin..... 34**
  - 5.2. Weekly drought monitoring..... 34**
- 6 Weather and Water Level Forecast and Flash Flood information ..... 37**
  - 6.1 Rainfall forecast ..... 37**
  - 6.2 Water level forecast ..... 39**
  - 6.3 Flash Flood Information..... 41**
  - 6.4 Drought forecast ..... 41**
- 7 Summary and Possible Implications ..... 42**
  - 7.1. Rainfall and its forecast..... 42**
  - 7.2. Flash flood and its trends..... 42**
  - 7.3. Drought condition and its forecast..... 42**
- Annex A: Weekly water level monitoring at 22 key stations..... 43**
- Annex B: Tables for weekly updated water levels and rainfall at the Key Stations..... 25**

## List of Figures

<b>Figure 1: Weather conditions over the LMB.....</b>	<b>27</b>
<b>Figure 2: Outlook of wet and dry conditions over the Asian countries by ASMC.....</b>	<b>28</b>
<b>Figure 3: One tropical storm risk observed on 20 April 2026 .....</b>	<b>28</b>
<b>Figure 4: Weekly rainfall distribution over the LMB during 14 – 20 April 2026.....</b>	<b>29</b>
<b>Figure 5: The key stations along LMB for river flood forecasting .....</b>	<b>31</b>
<b>Figure 6. Water level at the Jinghong hydrological station up to 20 April 2026.....</b>	<b>32</b>
<b>Figure 7: Seasonal change of inflows and outflows of Tonle Sap Lake. ....</b>	<b>33</b>
<b>Figure 8. The seasonal change in monthly flow volume of Tonle Sap Lake. ....</b>	<b>33</b>
<b>Figure 9: Weekly standardized precipitation index .....</b>	<b>35</b>
<b>Figure 10: Weekly Index of Soil Water Fraction .....</b>	<b>36</b>
<b>Figure 11: Weekly Combined Drought Index.....</b>	<b>37</b>
<b>Figure 12: Accumulated rainfall forecast from CHIRP-GFS (21 - 27 April 2026).....</b>	<b>38</b>
<b>Figure 13. Weekly forecasts for SPI and CDI.....</b>	<b>41</b>

# List of Tables

**Table 1. The monthly change in the flow volume of Tonle Sap Lake. .... 34**

**Table 2. Weekly River Monitoring Bulletin. .... 40**

## Key Messages

Key messages for this weekly report are presented below.

### Rainfall monitoring and forecast

- In the period of 14 - 20 April 2026, light rainfall that is expected to occur in some areas in the LMB.
- During 21 - 27 April 2026, light rainfall that is expected to occur in some areas in the LMB.

### Water level monitoring and forecast

- At 22 key monitoring stations along the Mekong mainstream from 14 – 20 April 2026, at most of stations, water levels are above LTAs except for Nongkhai, Paksane, Savannakhet and those from Phnom Penh (Bassac) downstream. However, the 6 monitoring stations remain in normal condition with respect to the flow threshold (PMFM Thresholds). It is also the same condition for Tan Chau and Chau Doc monitoring stations, which are significantly influenced by sea tidal fluctuation.
- In the period of 21 – 27 April 2026, water levels at upper stations are expected to rise from Chiang Saen to Savannakhet, while from Khong Chiam downstream, they are expected to remain stable. At Tan Chau and Chau Doc stations, the water levels are predicted to be also fluctuated, resulting from the influence of sea tidal patterns. At most of stations, water levels are above LTAs except for Nongkhai, Phaksane, Savannakhet, and those from Phnom Penh (Bassac) downstream.

### Drought condition and forecast

- During 14 - 20 April 2026, the combined drought indicator (CDI), that the LMB is likely to experience moderate to severe drought condition in some areas in the central and southern part of Lao PDR, the northeastern part of Thailand, and Cambodia.
- The weekly forecast from 21- 27 April 2026 indicates that the LMB is likely to experience moderate to severe drought condition across the region.

## 1 Introduction

This Weekly Dry Season Situation Report presents a preliminary analysis of the weekly hydrological situation in the Lower Mekong River Basin (LMB) for **14 – 20 April 2026**. The trend and outlook for water levels are also presented.

This analysis is based on the daily hydro-meteorological data provided by the Mekong River Commission (MRC) Member Countries – Cambodia, Lao PDR, Thailand, and Viet Nam – and on satellite data. The water level indicated in this report refers to an above zero gauge of each station.

The report covers the following topics that are updated weekly:

- General weather patterns, including rainfall patterns over the LMB.
- Water levels in the LMB, including in the Tonle Sap Lake.
- Flash flood and drought situation in the LMB.
- Weather, water level and flash flood forecast, and
- Possible implications.

Mekong River water levels are updated daily and can be accessed from:

<http://ffw.mrcmekong.org/bulletin.php>.

Drought monitoring and forecasting information is available at:

<http://droughtforecast.mrcmekong.org>

Flash flood information is accessible at: <http://ffw.mrcmekong.org/ffg.php>

## 2 General Weather Patterns

From 14 - 20 April 2026, it is forecasted that the low-pressure system affected the Lower Mekong Basin. Under this circumstance, light rain occurred in some areas in the Lower Mekong Basin.

Figure 1 presents mean sea level pressure over the region in the next 7 days.

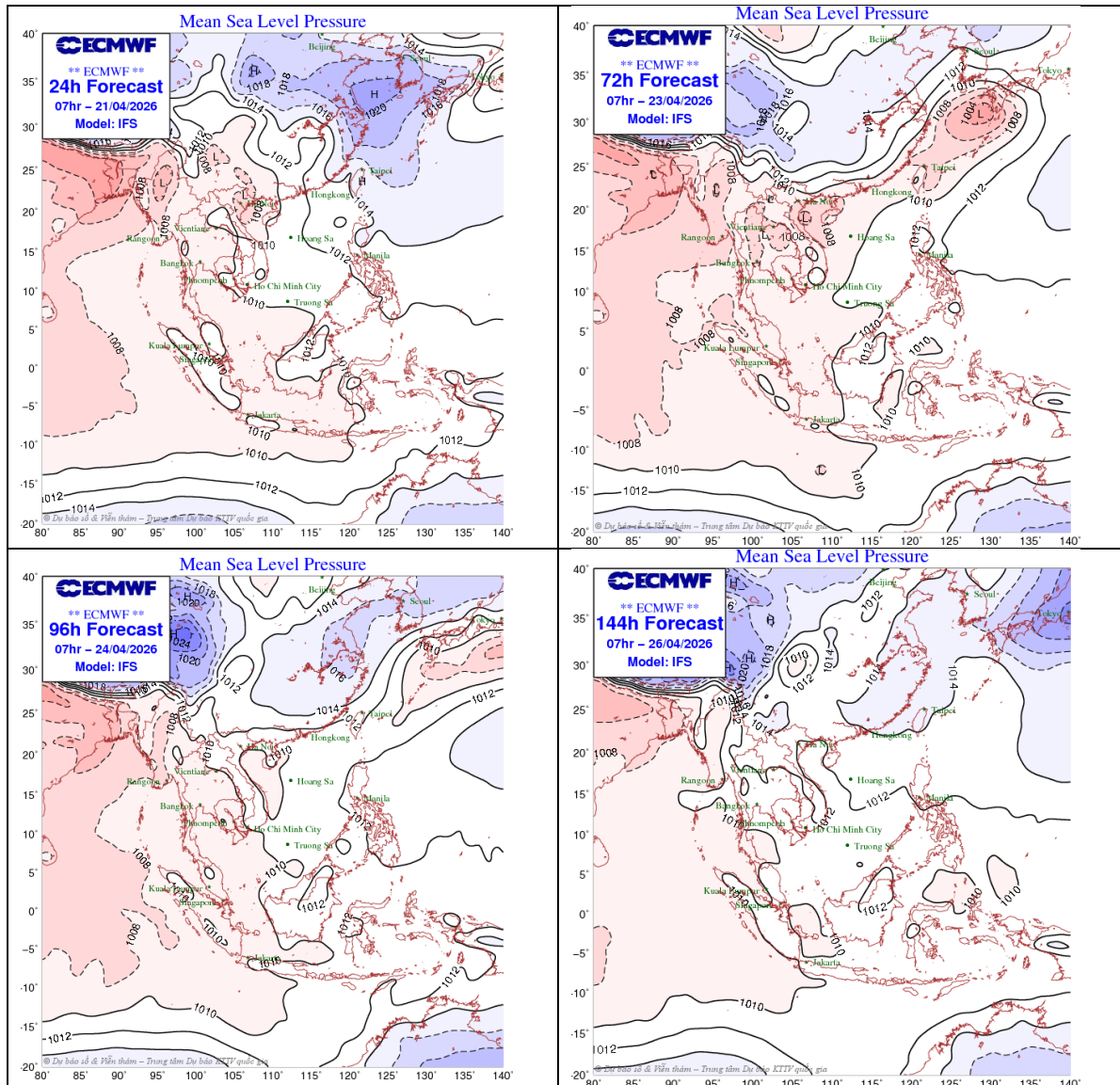


Figure 1: Weather conditions over the LMB

According to the ASEAN Specialised Meteorological Centre (ASMC, <http://asmc.asean.org/home/>), Drier than usual conditions are predicted over the entire LMB in Week 1 (13 – 19 April). However, warmer than usual temperatures are predicted over much of LMB in Week 1 (13 – 19 April), easing in Week 2 (20 – 26 April). Figure 2 shows the outlook of weather condition from 13 to 26 April 2026 in Southeast Asia based on results from the NCEP model (National Centres for Environmental Prediction).

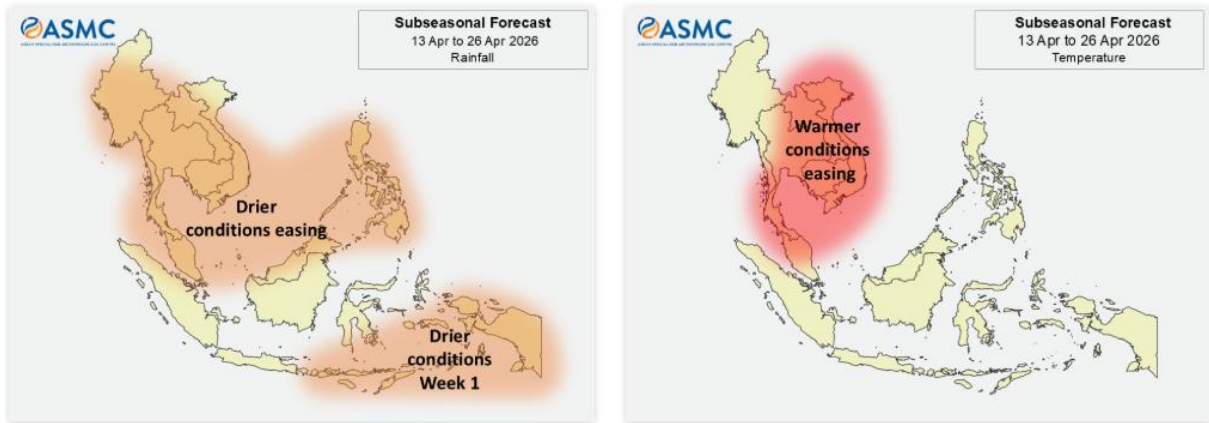


Figure 2: Outlook of wet and dry conditions over the Asian countries by ASMC.

Based on the JMA tropical storm (TS) information ([https://www.jma.go.jp/bosai/weather\\_map/#lang=en](https://www.jma.go.jp/bosai/weather_map/#lang=en)), there is one active NW pacific system as of 20 April 2026 as displayed in **Figure 3**. However, there is not any significant impact to the LMB.

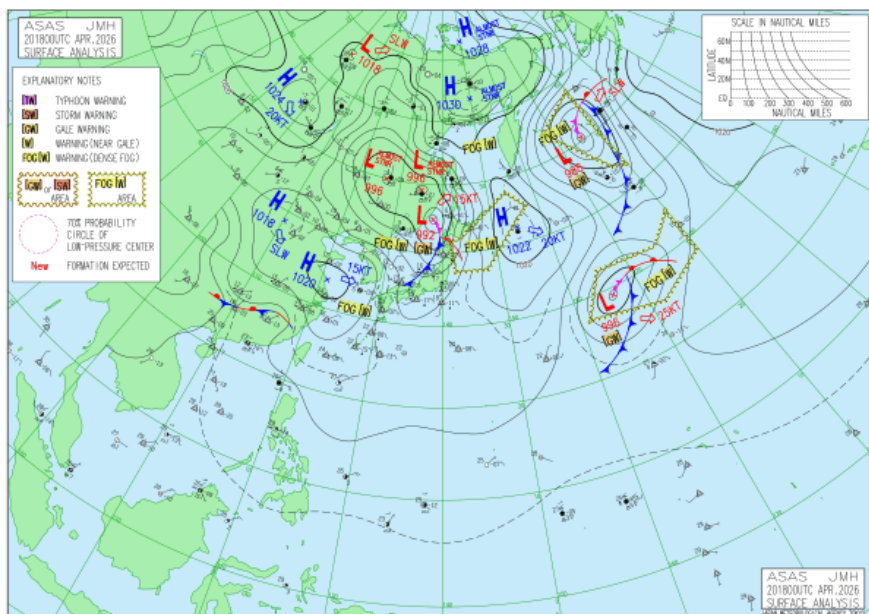


Figure 3: One tropical storm risk observed on 20 April 2026

### 3. Rainfall and Water Level Monitoring

#### 3.1. Rainfall monitoring

The weekly accumulated rainfall based on the observed data provided by the MRC Member Countries – Cambodia, Lao PDR, Thailand, and Viet Nam – from 14 - 20 April 2026 (**Figure 4**). Light rainfall that is expected to occur in some areas in the LMB.

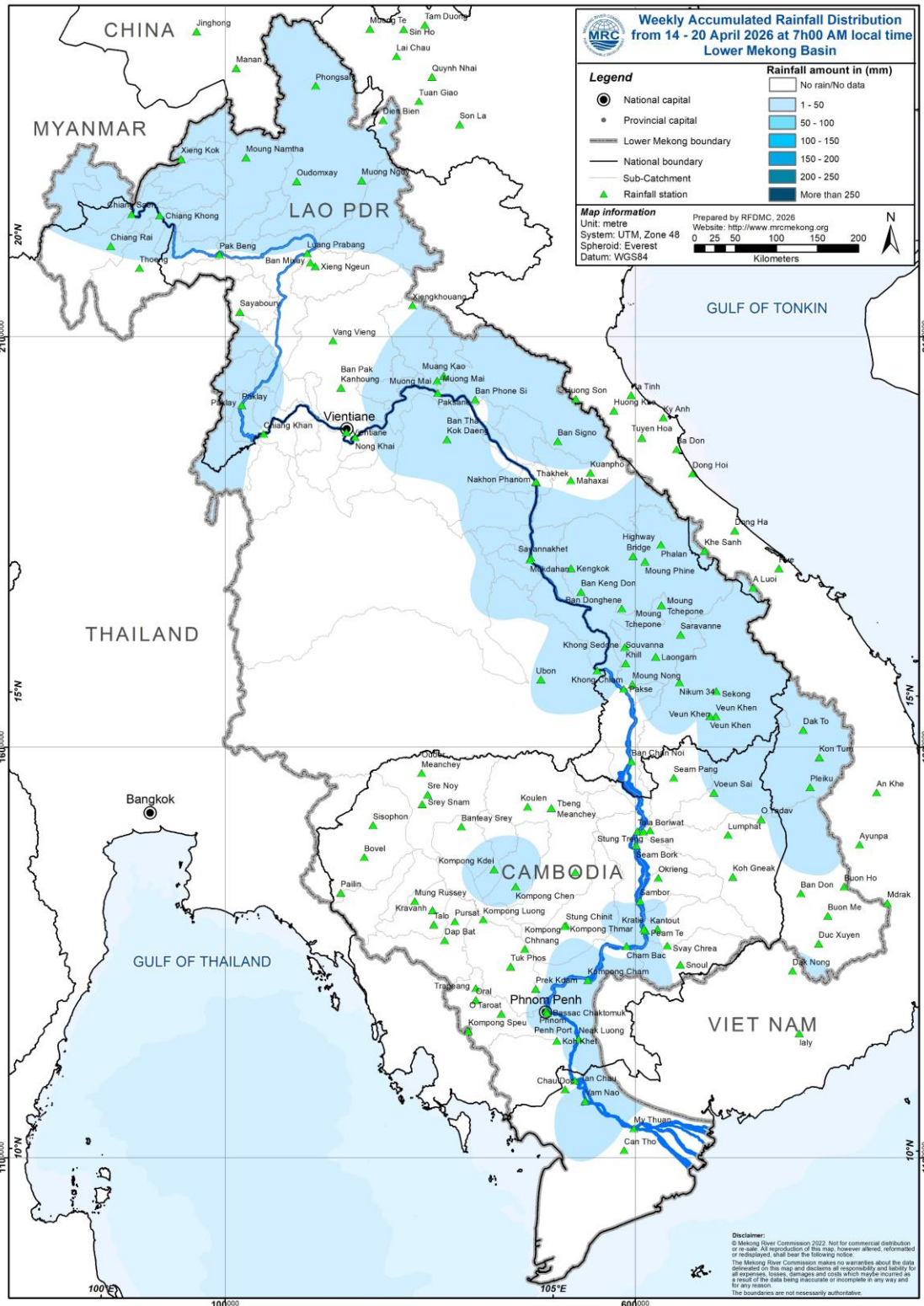


Figure 4: Weekly rainfall distribution over the LMB during 14 – 20 April 2026

### 3.2. Water level monitoring

The hydrological regimes of the Mekong mainstream are illustrated by recorded water levels and flows at key mainstream stations: at Chiang Saen to capture mainstream flows entering from the Upper Mekong Basin (UMB); at Vientiane to present flows generated by climate conditions in the upper part of the LMB; at Pakse to investigate flows influenced by inflows from the larger Mekong tributaries; at Kratie in Cambodia to capture overall flows of the Mekong Basin; and at Viet Nam's Tan Chau and Chau Doc to monitor flows to the Delta.

The key stations along the LMB and their respective model application for River Flood Forecasting during the wet season from June to October and River Monitoring during the dry season from November to May are presented in **Figure 5**. The hydrograph for each key station is available from the MRC's River Flood Forecasting: <http://ffw.mrcmekong.org/overview.php>.

During 14 – 20 April 2026, the observed water level (WL) at Jinghong hydrological station<sup>1</sup>, was almost constant and ranges between 535.79 m and 537.15 m, which are corresponding to the outflow between 1,210.00 m<sup>3</sup>/s to 2,280.00 m<sup>3</sup>/s (recorded on 7:00 am), respectively (**Figure 6**). The water level in Chiang Saen Station also indicated a slight fluctuation ranging from 2.05 m to 2.31 m. At the same period, the water level in Luang Prabang station has been stable at 8.74 m compared to the previous week. The water level at Chiang Khan station also decreased from 4.49 m to 4.16 m. During the same period, the water levels observed at Vientiane, Nongkhai, Nakhon Phanom, Thakhek, Mukdahan, and Savannakhet stations decreased from 2.20 m to 2.03 m, 1.42 m to 1.13 m, 3.00 m to 2.68 m, 1.86 m to 1.64 m, 3.12 m to 2.98 m, 2.32 m to 2.18 m, and 0.79 m to 0.63 m, respectively. However, at Khong Chiam Pakse, Stung Treng, and Kratie stations the water levels have also decreased from 2.69 m to 2.54 m, 1.60 m to 1.46 m, 3.00 m to 2.88 m, and 8.01 m to 7.73 m, respectively as compared to the previous week.

Moving down to the floodplain area at Kompong Cham, Phnom Penh (Bassac), and Phnom Port stations, the water levels have been stable from the previous week. However, the water level at Koh Khel, Neak Luong and Prek Kdam has slightly decreased from 1.52 m to 1.36 m, 1.28 m to 1.02 m, and 1.08 m to 0.76 m, respectively.

Similar to the previous week, the water levels from 14 to 20 April 2026 at Viet Nam's Tan Chau and Chau Doc fluctuated between their LTA values due to daily tidal effects from the sea. At the Tan Chau station, the water levels varied between 0.01 m and 0.30 m, while at the Chau Doc station, they ranged from 0.05 m and 0.30 m.

---

<sup>1</sup> Near-real time data of hydro-meteorological monitoring at the Jinghong hydrological station is available at <https://portal.mrcmekong.org/monitoring/river-monitoring-telemetry>.

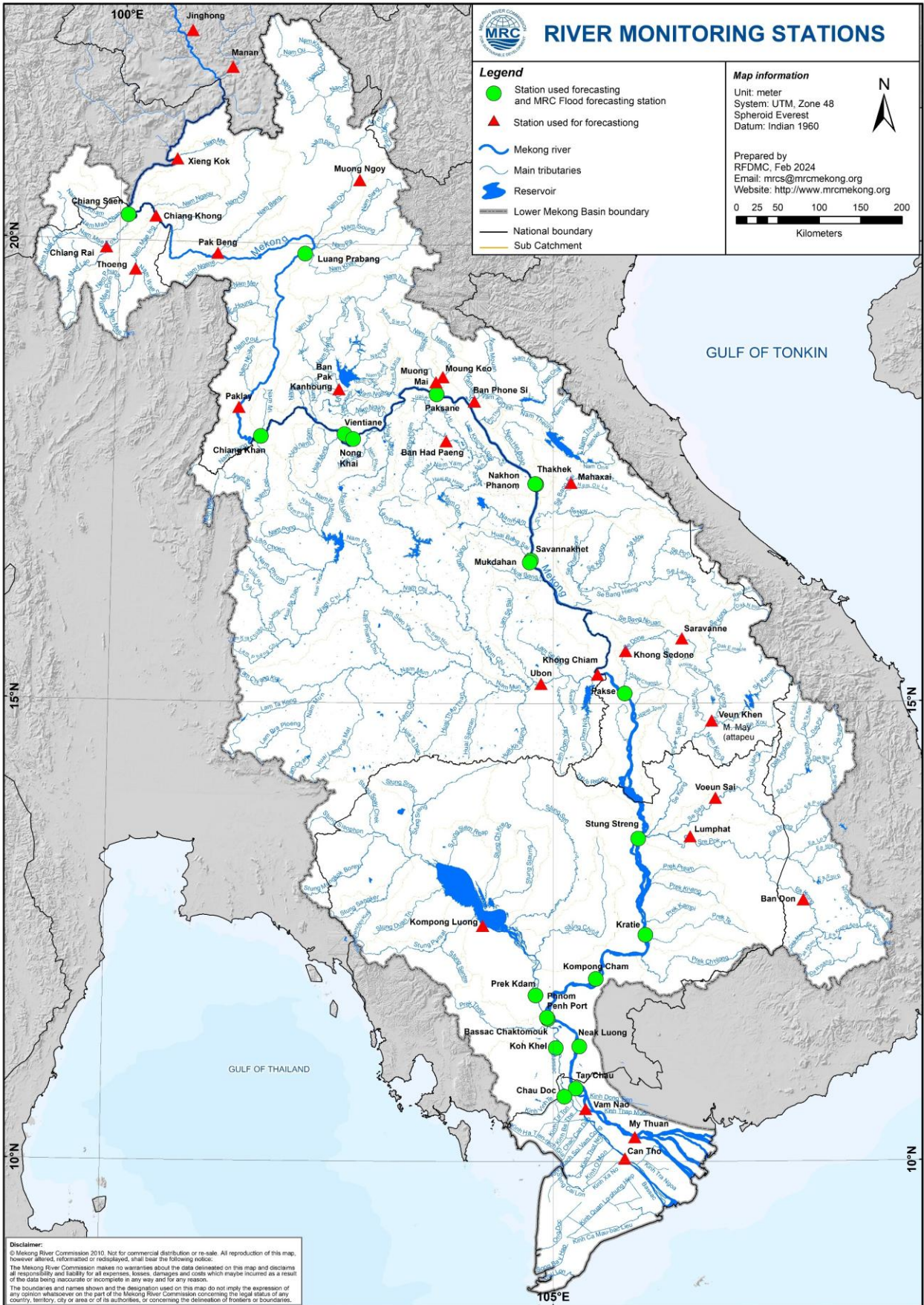
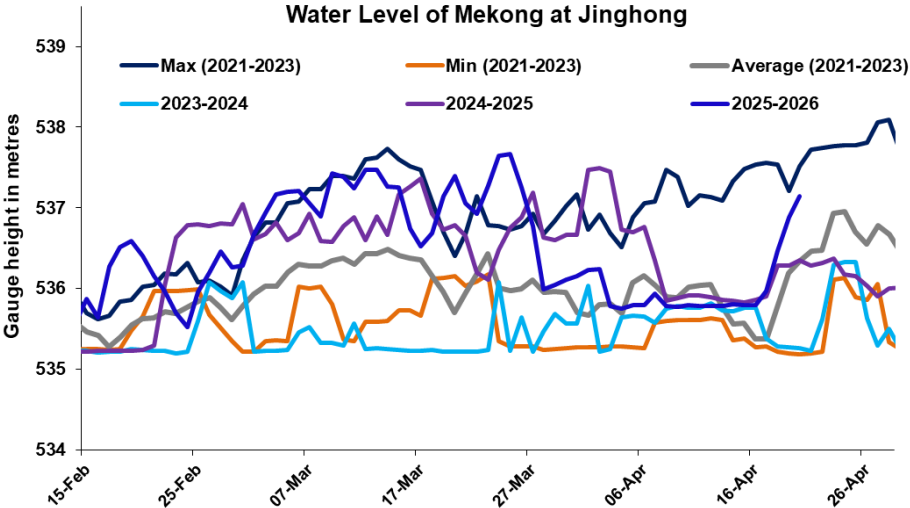


Figure 5: The key stations along LMB for river flood forecasting

The water levels in key monitoring stations on 20 April 2026 are in normal conditions. At most of stations, water levels are above LTAs except for Nongkhai, Paksane, Savannakhet and those from Phnom Penh (Bassac) downstream. Moreover, all stations with available PMFM thresholds are in normal conditions. The graphics of water level monitoring in all key stations are presented in **Annex A** and the weekly water levels and rainfall at each key station are summarised in **Annex B**.



**Figure 6. Water level at the Jinghong hydrological station up to 20 April 2026**

At the end of the wet season, when water levels along the Mekong River subside, the outflow of the Tonle Sap Lake (TSL) returns to the Mekong River and then to the Delta. This phenomenon normally takes place between September and October. Based on flow observation at Prek Kdam monitoring station, the outflow of the Tonle Sap Lake took place since 14 September 2025.

The outflow flow is calculated based on a formula of rating-curves using by difference of water levels at Kompong Luong and Phnom Penh Port stations for slop and Prek Kdam as cross-section of the Lake. The formula of flow is as follows:

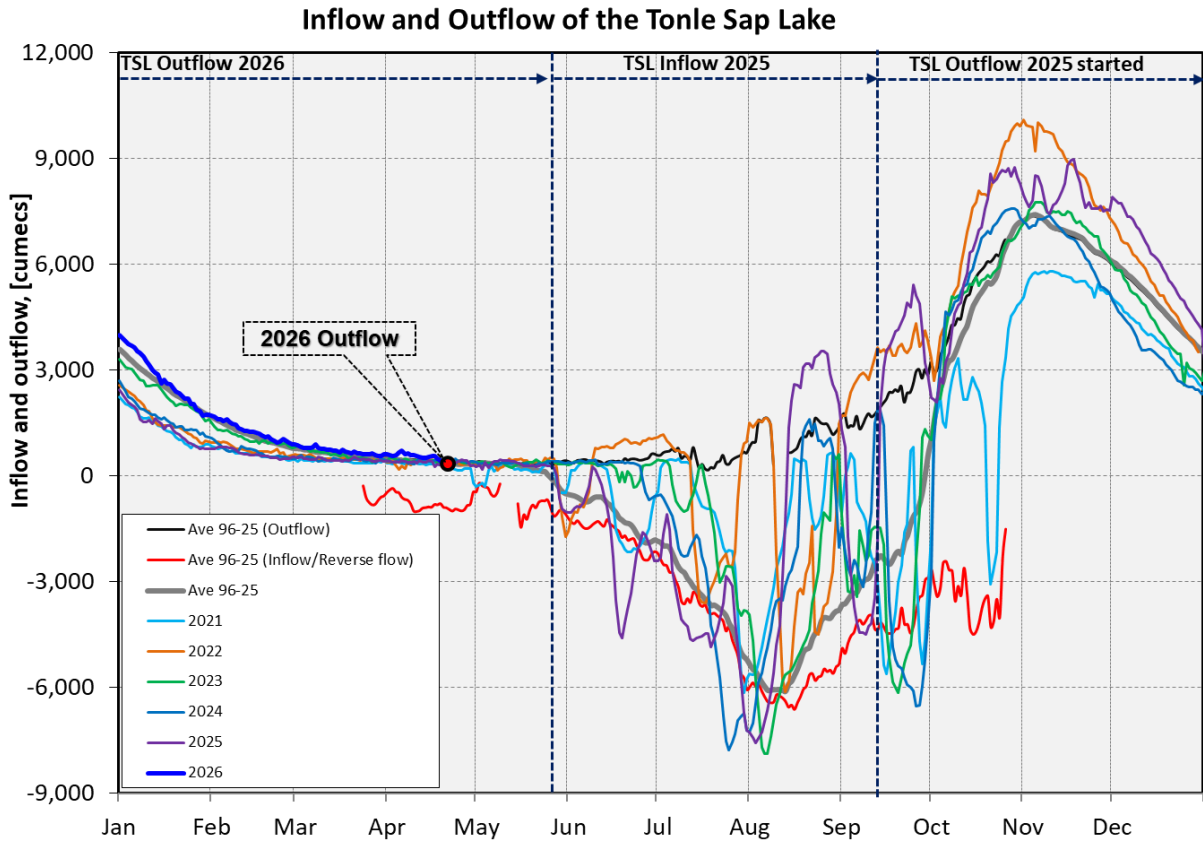
$$Flow = WL_{Prek\ Kdam}^{1.2} \times \sqrt{|WL_{Phnom\ Penh\ Port} - WL_{Kompong\ Luong}|}$$

Where, WL is water level in m (msl).

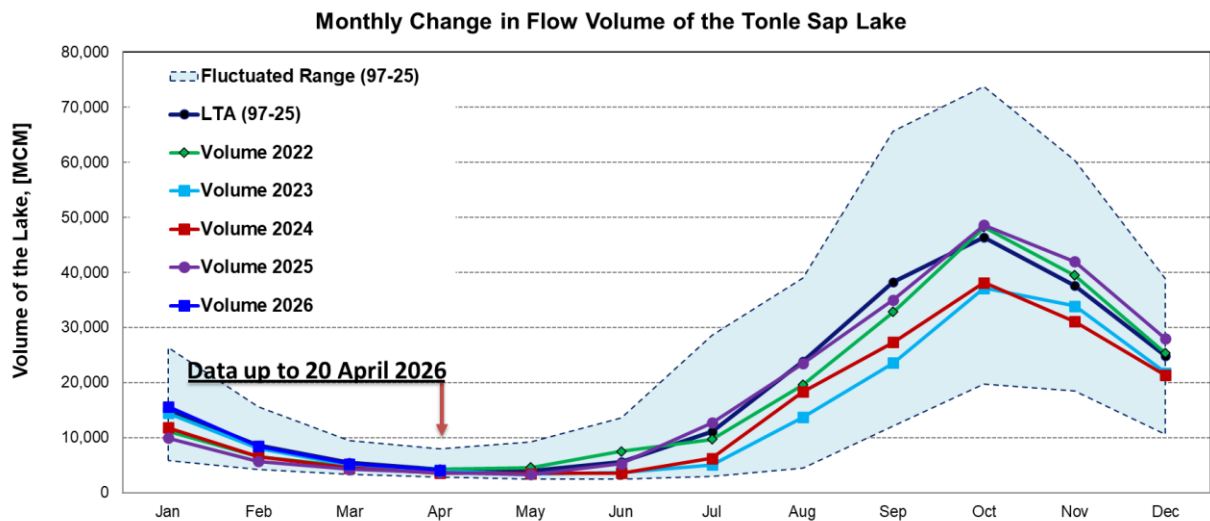
The seasonal changes of the inflow/reverse flow and the outflow of the TSL at Prek Kdam in comparison with the flows of 2020, 2021 and 2022, 2023, 2024 and their LTA level (1997–2024) are illustrated in **Figure 8**. Up to 20 April 2026, it was observed that the main outflow from Tonle Sap Lake has recessing (**Figure 8**). This decreased outflow of Tonle Sap Lake was most likely caused by low inflows from its tributaries.

The seasonal changes in monthly flow volumes up to 20 April 2026 for the TSL compared with that in 2020, 2021, 2022, 20, 2024, 2025 and their LTAs, and the fluctuation levels (1997–

2024) are presented in **Table 1**. The mean monthly water volume of the Tonle Sap Lake in March 2026 is lower than its LTA (about 95.12 %), and all recent years (2020 to 2025) during the same period (**Figure 8 and Table 1**).



**Figure 7: Seasonal change of inflows and outflows of Tonle Sap Lake.**



**Figure 8. The seasonal change in monthly flow volume of Tonle Sap Lake.**

**Table 1. The monthly change in the flow volume of Tonle Sap Lake.**

Month	LTA (97-25) [MCM]	Max Volume [MCM]	Min Volume [MCM]	Volume 2020 [MCM]	Volume 2021 [MCM]	Volume 2022 [MCM]	Volume 2023 [MCM]	Volume 2024 [MCM]	Volume 2025 [MCM]	Volume 2026 [MCM]	Volume in 2026 [%], compared with its LTA
Jan	15016.17	26357.53	5906.80	5906.80	9923.80	11214.32	14422.11	11824.86	9927.00	15639.19	104.15
Feb	8543.47	15596.22	4198.60	4264.19	5832.97	6558.79	8069.29	6505.88	5690.52	8447.12	98.87
Mar	5522.42	9438.24	3347.07	3553.99	4264.88	4736.52	5080.64	4488.23	4256.33	5252.98	95.12
Apr	4279.51	8009.14	2866.91	2992.61	3556.68	4288.31	3884.16	3569.01	3697.92	4146.76	96.90
May	3985.91	9176.93	2417.81	2594.92	3240.78	4556.83	3438.66	3517.79	3322.45		
Jun	5612.10	13635.01	2468.70	2641.88	3798.29	7489.04	3689.97	3586.07	5278.20		
Jul	11070.72	28599.56	2925.86	2925.86	5346.73	9703.79	5062.21	6247.29	12706.40		
Aug	23851.22	39015.12	4433.46	5941.07	10547.80	19554.70	13694.57	18304.81	23464.06		
Sep	38261.48	65632.35	12105.31	12105.31	16382.34	32860.34	23550.60	27310.26	35010.86		
Oct	46341.38	73757.23	19705.50	20799.13	27318.21	48199.12	37141.40	38139.87	48583.60		
Nov	37653.83	60367.33	18534.61	27546.80	28982.93	39452.53	33929.52	31056.48	41943.59		
Dec	24911.64	38888.95	10563.49	18251.65	20170.76	25346.65	21757.70	21328.51	27941.36		
	Critical situation: lower than long-term minimum values (LTMIN)										
	Normal condition: within the range of long-term average (LTA) and max (LTMAX) values										
	Low volume situation: lower than long-term average (LTA)										
Unit: Million Cubic Meter (1 MCM= 0.001 Km <sup>3</sup> )											

**Remarks:** the volume of Tonle Sap Lake in 2026 is updated until 20 April 2026.

## 4. Flash Flood in the Lower Mekong Basin

During the weekly monitoring period from 14 - 20 April 2026, the LMB received light rain in some areas.

According to the Southeast Asia Flash Flood Guidance System (SEAFFGS) and analysis, no flash flood risk over the LMB.

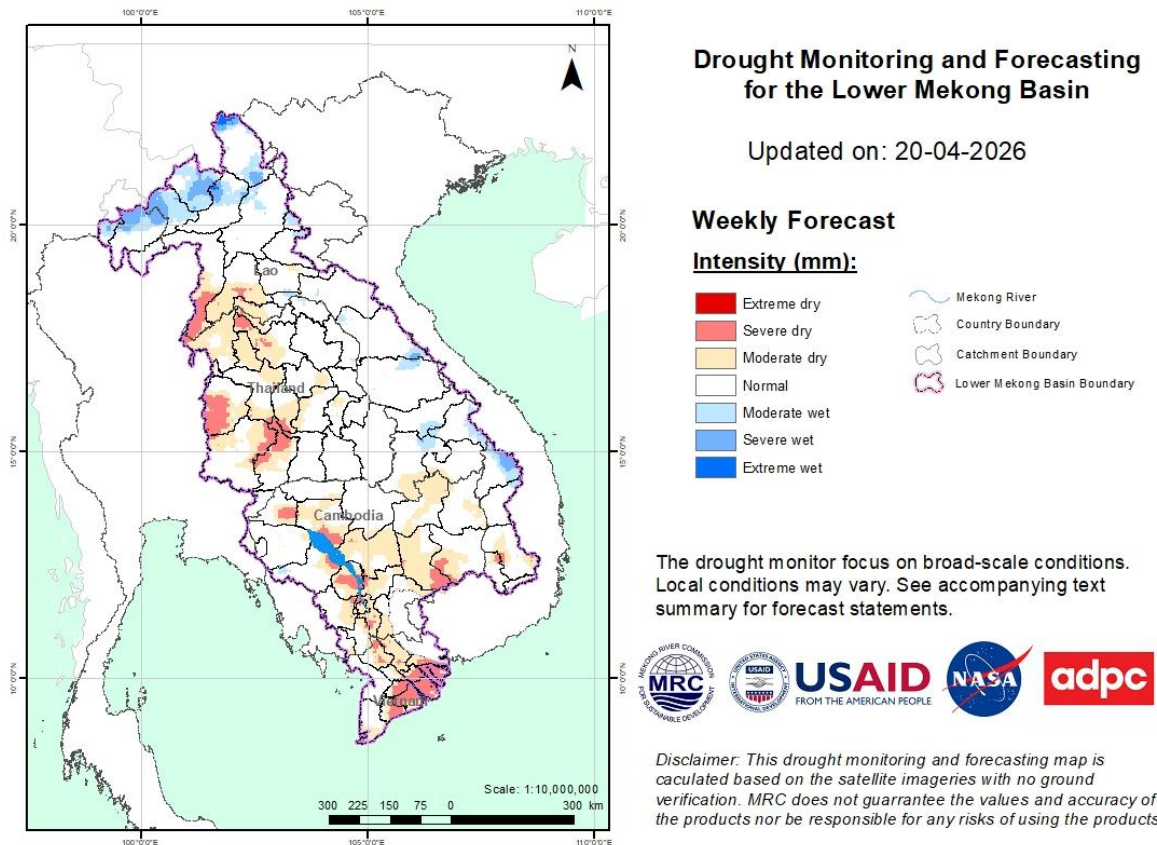
## 5. Drought Monitoring in the Lower Mekong Basin

### 5.2. Weekly drought monitoring

Drought monitoring data for 2026 are available from Monday to Sunday every week; thus, the reporting period is normally delayed by one day compared to Flood and Flash Flood reports. We adopt the Index of Soil Water Fraction (ISWF) data obtained from FFGS to represent soil moisture of agricultural indicator for both dry and wet seasons.

- **Weekly Standardised Precipitation Index (SPI1)**

Meteorological indicator shows that from 14 - 20 April 2026, as shown in **Figure 9**, the LMB was facing moderate to severe dry conditions over the centre and lower part.



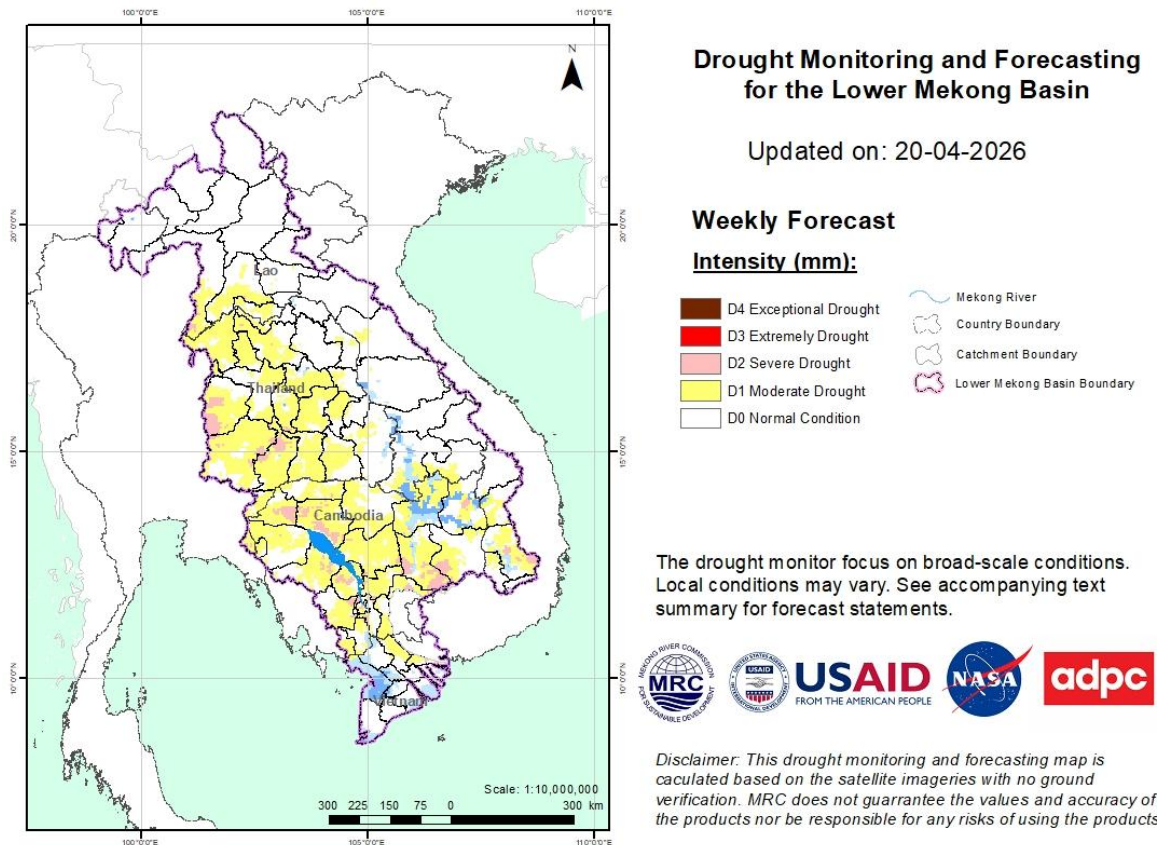
**Figure 9: Weekly standardized precipitation index**

- **Weekly Index of Soil Water Fraction (ISWF)**

Soil moisture conditions from 14 - 20 April 2026, as displayed in **Figure 10**, the LMB was facing moderate to severe drought conditions.

**Note:** *The index of soil water fraction presents the current soil water fraction conditions compared with normal month; therefore, it normally shows extremely dry during dry season which is completely different from SPI that is standardized to its specific month of the years. However, this does not mean that the areas are threatened by agricultural drought as generally during transition period of wet and dry seasons and dry season only the irrigated areas are used for agricultural plantation.*





**Figure 11: Weekly Combined Drought Index**

More information on Drought Forecasting and Early Warning (DFEW) as well as the explanation is available here: <http://droughtforecast.mrcmekong.org/templates/view/our-product>. DFEW provides not only weekly monitoring and forecasting information but also a three-month forecast of drought indicators with seasonal outlook which are updated every month based on international weather forecast models. Details on drought forecast are described in section 6.4 of this report.

## 6 Weather and Water Level Forecast and Flash Flood information

### 6.1 Rainfall forecast

During 21 - 27 April 2026, the accumulated rainfall over the entire Lower Mekong Basin is distributed with the light rain is expected to occur in some areas in the LMB including the central part of Laos and the northeastern part of Thailand based on CHIRPS-GFS (**Figure 12**).

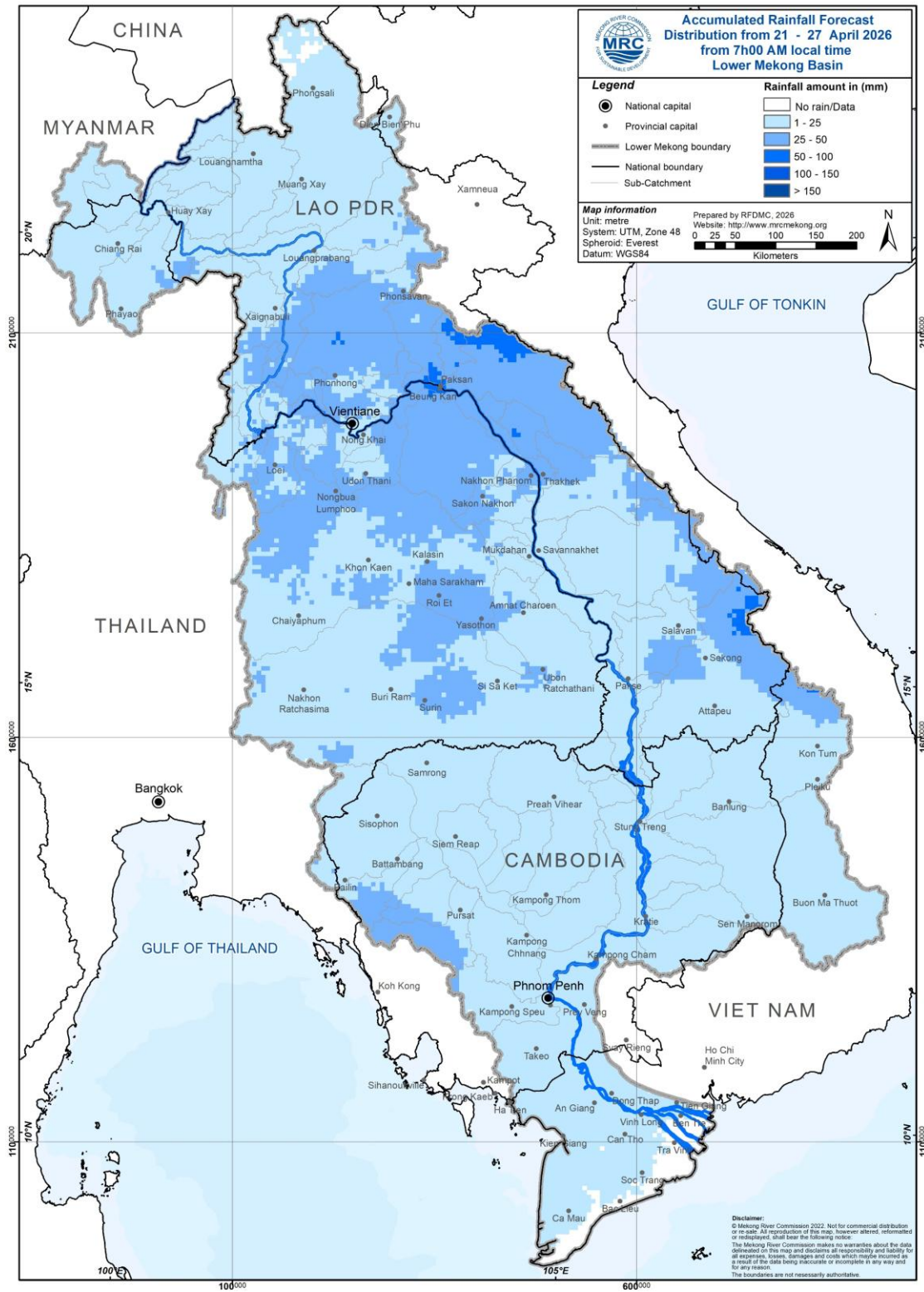


Figure 12: Accumulated rainfall forecast from CHIRP-GFS (21 - 27 April 2026)

## 6.2 Water level forecast

From 21 to 27 April 2026, water levels at most of stations are expected to be in normal conditions. The water levels at upper part of the LMB (Chiang Saen to Savannakhet) are expected to increase, while from Khong Chiam to Koh Khe, they are expected to remain stable. Water levels at all stations are expected to be above LTAs except for Nongkhai, Phaksane, Savannakhet, and those from Phnom Penh (Bassac) downstream.

In Chiang Saen monitoring station, the water level is expected to be fluctuated with increasing trend over the forecasting period of 21 – 27 April 2026. The water level in Luang Prabang stations affected by backwater is likely slightly fluctuating from 8.74 m to 9.02 m with slight increasing trend. Moreover, at Chiang Khan, Vientiane and Nongkhai stations, the water level is expected to increase approximately 0.44 m, 0.31 m, and 0.30 m, respectively.

Along the Mekong mainstream, the water levels at Paksane, Nakhon Phanom, Thakhek, Mukdahan, and Savannakhet stations, water levels are expected to increase next week approximately, 0.16 m, 0.27 m, 0.28 m, 0.21 m, and 0.23 m, respectively.

Moving down at Khong Chiam, Pakse, Stung Treng, Kratie, Kompong Cham, Phnom Penh (Bassac), Phnom Penh Port, and Koh Khel stations, water levels will remain stable for the next week. However, at Neak Luong and Prek Kdam stations, the water levels are expected to slight increase and decrease approximately 0.08 m and -0.08 m, respectively.

For the Tan Chau station on the Mekong River and Chau Doc station on the Bassac River, water levels will be fluctuating approximately ranging between -0.58 m & -0.28 m and -0.55 m & -0.25 m, respectively, following daily tidal effects from the sea.

The water levels at all stations are forecasted to be above their LTAs from 21 to 27 April 2026 except for Nongkhai, Phaksane, Savannakhet, and those from Phnom Penh (Bassac) downstream.

The weekly River Monitoring Bulletin and forecasting issued on 20 April 2026 can be found in **Table 2**. Results of the weekly river monitoring and forecasting bulletin are also available at <http://ffw.mrcmekong.org/bulletin.php>

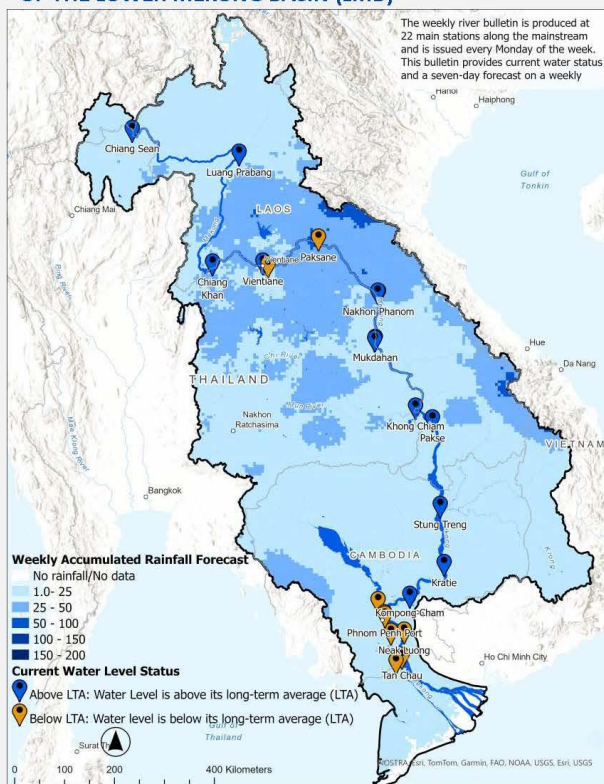
**Table 2. Weekly River Monitoring Bulletin.**

**MEKONG RIVER MONITORING AND FORECASTING BULLETIN**

**Monitoring on 20 April 2026 and weekly forecasting from 21 to 27 April 2026**

**Highlights:** Today's water levels at all stations are in normal conditions. In the next 7 days, water levels at most of stations are expected to remain above LTAs and to either increasing or remain stable except for Neak Luong & Prek Kdam stations.

**THE FORECASTING HYDROLOGICAL STATION MAP OF THE LOWER MEKONG BASIN (LMB)**



**NOTES**

- Today's water levels are in normal conditions. At most of stations, water levels are above LTAs except for Nongkhai, Paksane, Savannakhet and those from Phnom Penh (Bassac) downstream.
- In the next 7 days, light to moderate rainfall is expected to be localized in parts of the LMB, particularly in the upper and middle part of the LMB.
- In the next 7 days, water levels at all stations are expected to be above LTAs except for Nongkhai, Phaksane, Savannakhet, & those from Phnom Penh (Bassac) downstream. Most of them are expected to be either drop or remain stable.

**CURRENT WATER LEVEL STATUS**

Monitoring Station	Rainfall (mm)	Zero gauge amsl (m)	Water level againts zero gauge (m)		Current Status	Flow Threshold (PMFM*GA)
	19-Apr		19-Apr	20-Apr		
Jinghong	15.0	-	536.88	537.15		
Chiang Saen	0.0	357.110	2.06	2.31	Above LTA	Normal
Luang Prabang**	0.0	267.195	8.60	8.74	Above LTA	-
Chiang Khan	0.0	194.118	4.16	4.16	Above LTA	-
Vientiane	nr	158.040	2.03	2.03	Above LTA	Normal
Nongkhai	0.0	153.648	1.13	1.13	Below LTA	-
Paksane	5.2	142.125	2.76	2.68	Below LTA	-
Nakhon Phanom	0.4	130.961	1.67	1.64	Above LTA	-
Thakhek	0.0	129.629	2.95	2.98	Above LTA	-
Mukdahan	0.0	124.219	2.19	2.18	Above LTA	-
Savannakhet	0.0	125.410	0.63	0.63	Below LTA	-
Khong Chiam	0.0	89.030	2.54	2.54	Above LTA	Normal
Pakse	0.0	86.490	1.46	1.46	Above LTA	Normal
Stung Treng	0.0	36.790	2.90	2.88	Above LTA	Normal
Kratie	33.4	-1.080	7.71	7.73	Above LTA	Normal
Kompong Cham	3.0	-0.930	2.86	2.96	Above LTA	-
Phnom Penh (Bassac)	5.5	-1.020	1.62	1.90	Below LTA	-
Phnom Penh Port	nr	0.000	0.60	0.88	Below LTA	-
Koh Khel	0.0	-1.000	1.38	1.36	Below LTA	-
Neak Luong	8.7	-0.330	1.08	1.02	Below LTA	-
Prek Kdam	0.0	0.000	0.85	0.76	Below LTA	-
Tan Chau	0.0	0.000	0.68	0.30	Below LTA	-
Chau Doc	nr	0.000	0.83	0.30	Below LTA	-

\* Procedures for Maintenance of Flows on the Mainstream  
 \*\* Luang Prabang station is influenced by hydropowers at its upstream and downstream

**WEEKLY WATER LEVEL FORECAST**

Forecasting Station	Forecasted Water Levels (m)							Status	Trend
	21-Apr	22-Apr	23-Apr	24-Apr	25-Apr	26-Apr	27-Apr		
Jinghong	-	-	-	-	-	-	-	-	-
Chiang Saen	2.50	2.73	2.88	2.80	2.65	2.51	2.45	Above LTA	Increasing
Luang Prabang	8.88	9.07	9.10	9.15	9.21	9.10	9.02	Above LTA	Increasing
Chiang Khan	4.22	4.54	4.79	5.14	4.94	4.64	4.60	Above LTA	Increasing
Vientiane	1.97	2.01	2.27	2.50	2.77	2.50	2.34	Above LTA	Increasing
Nongkhai	1.08	1.05	1.29	1.52	1.82	1.64	1.43	Below LTA	Increasing
Paksane	2.59	2.47	2.46	2.62	2.84	3.07	2.84	Below LTA	Increasing
Nakhon Phanom	1.60	1.56	1.50	1.55	1.67	1.81	1.91	Above LTA	Increasing
Thakhek	2.95	2.92	2.85	2.89	3.02	3.16	3.26	Above LTA	Increasing
Mukdahan	2.15	2.11	2.07	2.05	2.15	2.25	2.39	Above LTA	Increasing
Savannakhet	0.61	0.57	0.53	0.50	0.61	0.72	0.86	Below LTA	Increasing
Khong Chiam	2.53	2.49	2.46	2.41	2.40	2.51	2.61	Above LTA	Stable
Pakse	1.45	1.42	1.38	1.34	1.32	1.40	1.50	Above LTA	Stable
Stung Treng	2.88	2.88	2.88	2.88	2.88	2.88	2.90	Above LTA	Stable
Kratie	7.72	7.71	7.68	7.70	7.71	7.70	7.72	Above LTA	Stable
Kompong Cham	2.99	2.99	2.99	2.98	2.96	2.95	2.96	Above LTA	Stable
Phnom Penh (Bassac)	1.94	1.96	1.97	1.95	1.92	1.90	1.90	Below LTA	Stable
Phnom Penh Port	0.92	0.94	0.95	0.93	0.91	0.89	0.88	Below LTA	Stable
Koh Khel	1.33	1.30	1.28	1.30	1.33	1.36	1.40	Below LTA	Stable
Neak Luong	1.00	0.97	0.95	0.98	1.01	1.05	1.10	Below LTA	Increasing
Prek Kdam	0.75	0.72	0.72	0.70	0.68	0.65	0.68	Below LTA	Decreasing
Tan Chau	0.05	-0.25	-0.37	-0.42	-0.45	-0.40	-0.28	Below LTA	-
Chau Doc	0.08	-0.22	-0.34	-0.39	-0.42	-0.37	-0.25	Below LTA	-

MRC Secretariat, Vientiane, Lao PDR | E: mrcs@mrcmekong.org | T: +856 21 263 263  
 MRC Regional Flood and Drought Management Centre, Phnom Penh, Cambodia | E: floodforecast@mrcmekong.org | T: +855 23 425 353

<http://www.mrcmekong.org/>  
[http://fm.mrcmekong.org/bulletin\\_dry.php](http://fm.mrcmekong.org/bulletin_dry.php)  
[http://fm.mrcmekong.org/report\\_dry.php](http://fm.mrcmekong.org/report_dry.php)  
<https://pmfm.mrcmekong.org/>

**DISCLAIMER**  
 This information is supplied as a service to the governments of the MRC Member Countries so that it may be used as a tool within existing national disaster forecast and warning systems.



## 7 Summary and Possible Implications

### 7.1. Rainfall and its forecast

In the period of 14 - 20 April 2026, light rain occurred in some areas in the Lower Mekong Basin.

During 21- 27 April 2026, light rainfall that is expected to occur in some areas in the LMB.

#### Water level and its forecast

At 22 key monitoring stations along the Mekong mainstream from 14 – 20 April 2026, at most of stations, water levels are above LTAs except for Nongkhai, Paksane, Savannakhet and those from Phnom Penh (Bassac) downstream. However, the 6 monitoring stations remain in normal condition with respect to the flow threshold (PMFM Thresholds). It is also the same condition for Tan Chau and Chau Doc monitoring stations, which are significantly influenced by sea tidal fluctuation.

In the period of 21 – 27 April 2026, water levels at upper stations are expected to rise from Chiang Saen to Savannakhet, while from Khong Chiam downstream, they are expected to remain stable. At Tan Chau and Chau Doc stations, the water levels are predicted to be also fluctuated, resulting from the influence of sea tidal patterns. At most of stations, water levels are above LTAs except for Nongkhai, Phaksane, Savannakhet, and those from Phnom Penh (Bassac) downstream.

### 7.2. Flash flood and its trends

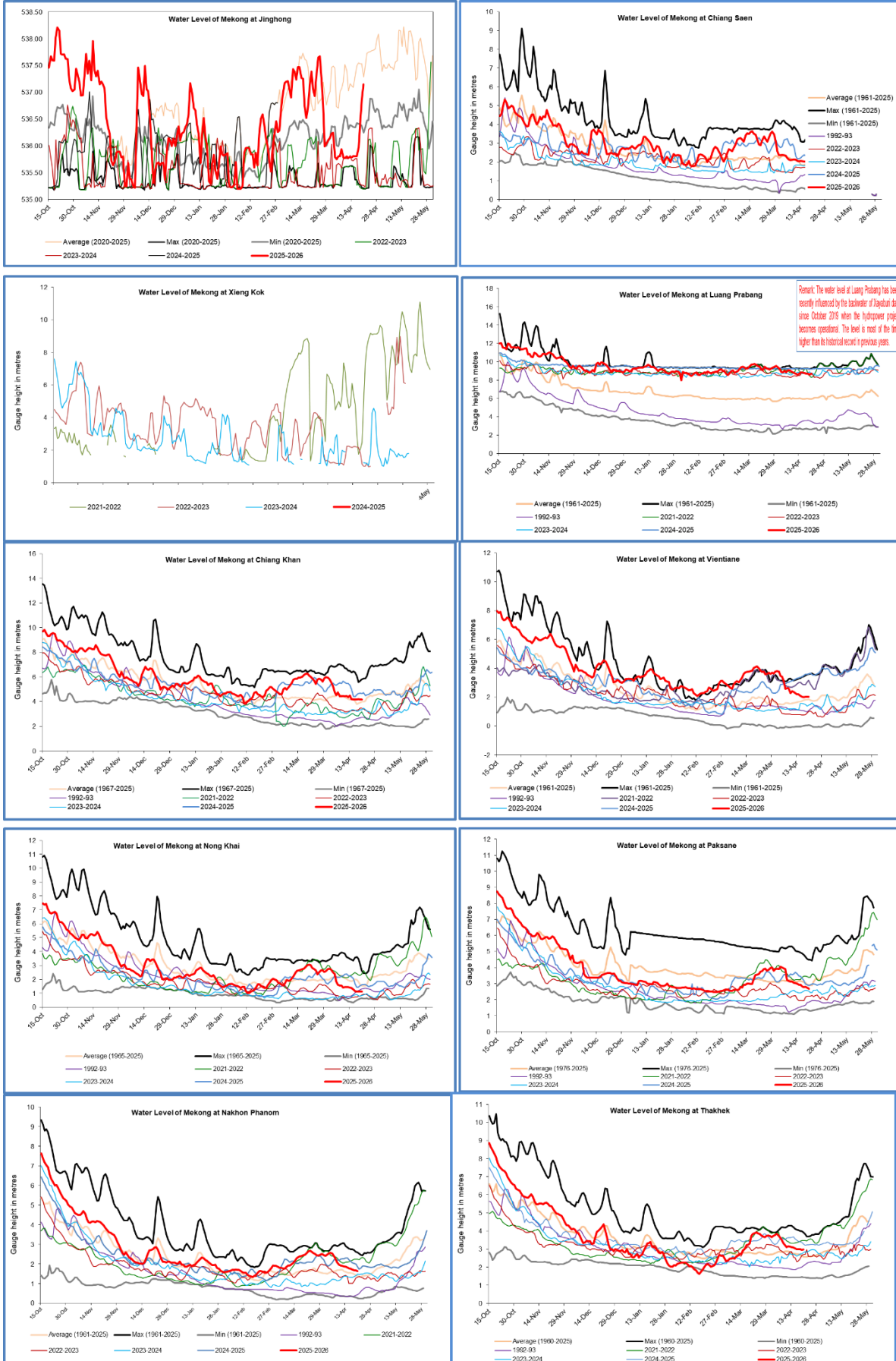
With the predicted of rainfall for the coming week as mentioned earlier in [section 6.1](#), major flash floods are not likely to happen in the LMB.

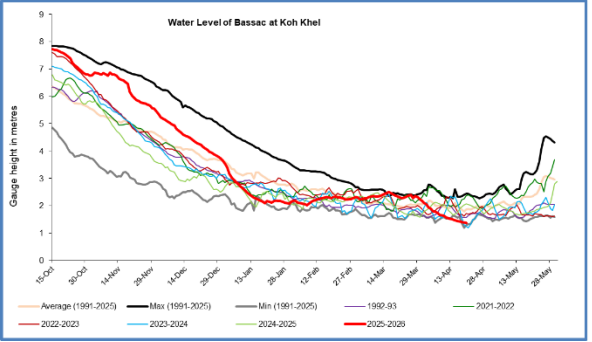
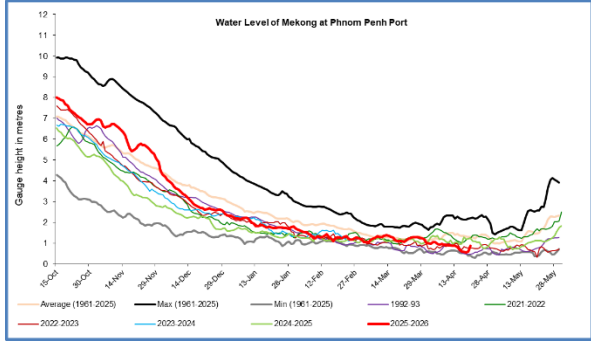
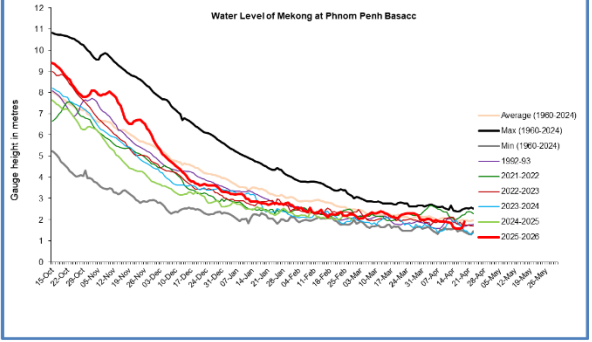
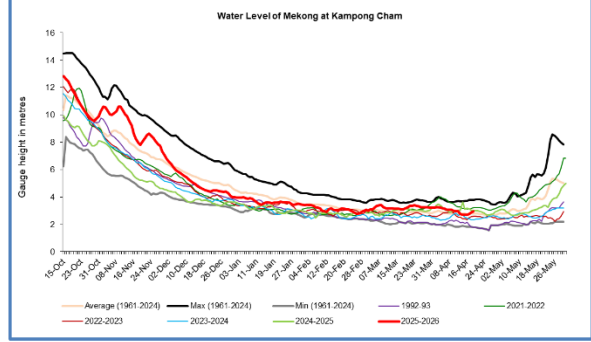
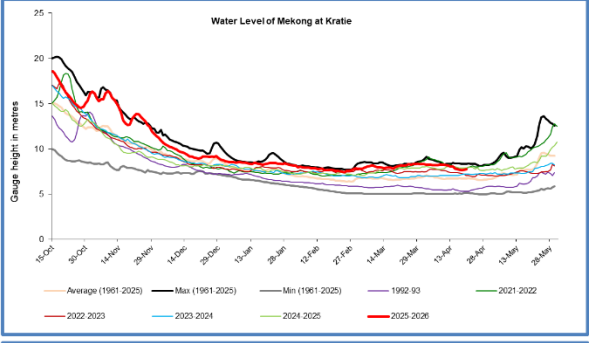
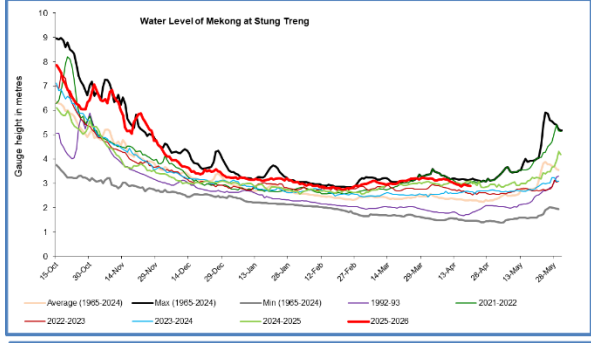
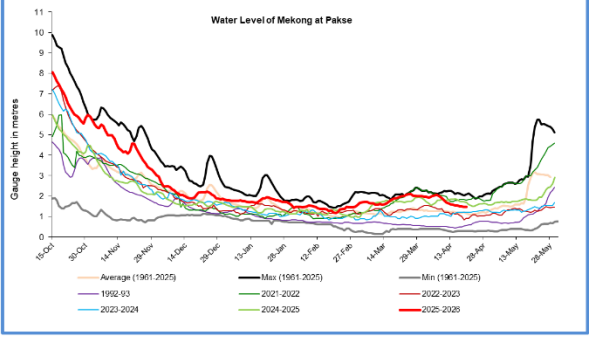
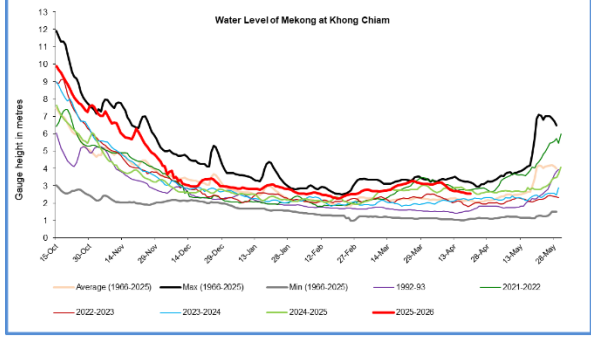
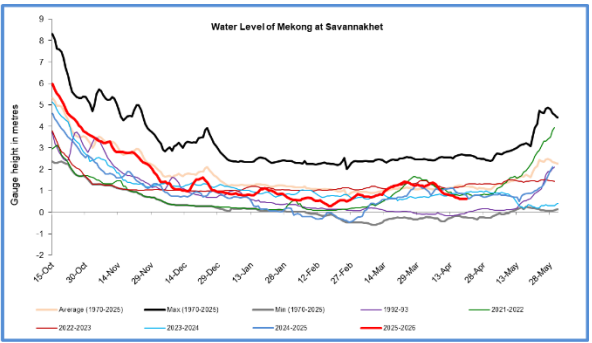
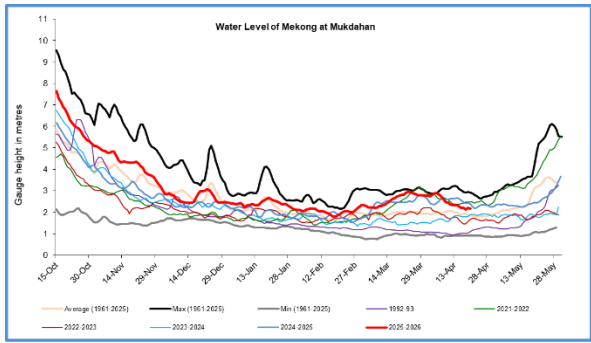
### 7.3. Drought condition and its forecast

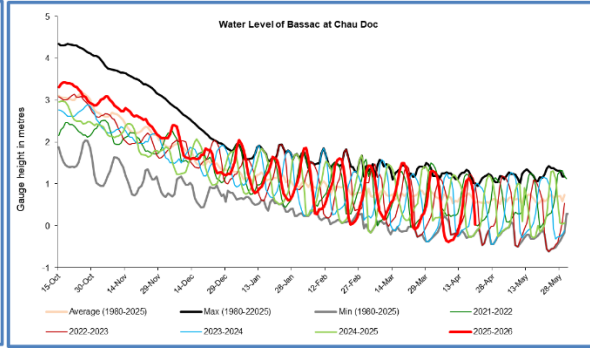
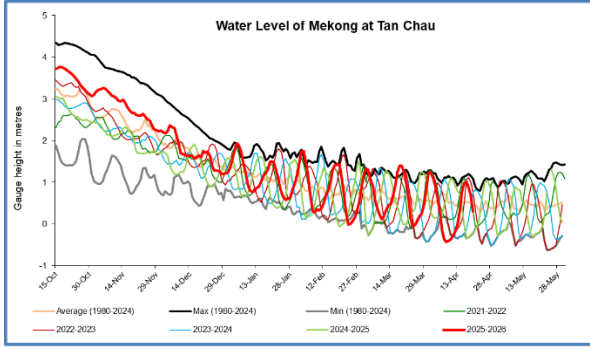
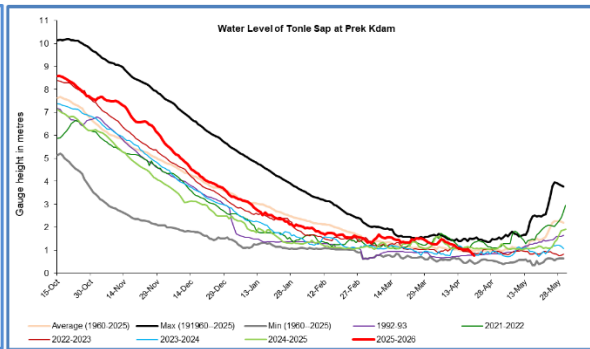
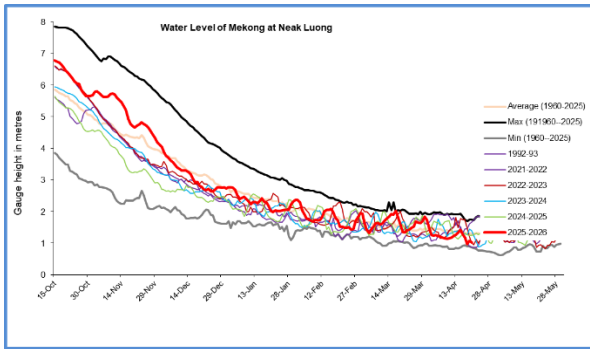
During 14 - 20 April 2026, the combined drought indicator (CDI), that the LMB is likely to experience moderate to severe drought condition in some areas in the central and southern part of Lao PDR, the northeastern part of Thailand, and Cambodia.

The weekly forecast from 21- 27 April 2026 indicates that the LMB is likely to experience moderate to extreme drought condition across the region based on the Combined Drought Index.

# Annex A: Weekly water level monitoring at 22 key stations







## Annex B: Tables for weekly updated water levels and rainfall at the Key Stations

Table A1: Weekly observed water levels

2026	Jinghong	Chiang Saen	Luang Prabang	Chiang Khan	Vientiane	Nongkhai	Paksane	Nakhon Phanom	Thakhek	Mukdahan	Savannakhet	Khong Chiam	Pakse	Stung Treng	Kratie	Kompong Cham	Phnom Penh (Bassac)	Phnom Penh Port	Koh Khel	Neak Luong	Prek Kdam	Tan Chau	Chau Doc
14/04/2026	535.81	2.03	8.84	2.03	2.20	1.38	2.94	1.82	3.08	2.31	0.76	2.68	1.56	2.95	8.01	2.78	1.83	0.82	1.50	1.34	1.06	0.32	0.37
15/04/2026	535.80	2.01	8.80	4.15	2.07	1.28	2.94	1.78	3.05	2.26	0.70	2.66	1.54	2.92	7.82	2.70	1.65	0.67	1.47	1.42	1.03	0.77	0.84
16/04/2026	535.80	2.01	8.76	4.15	2.04	1.15	2.84	1.75	3.00	2.20	0.67	2.63	1.54	2.87	7.74	2.70	1.58	0.60	1.45	1.28	1.03	0.98	1.07
17/04/2026	535.97	2.00	8.72	4.17	2.01	1.12	2.79	1.72	3.00	2.19	0.63	2.59	1.50	2.95	7.69	2.70	1.57	0.58	1.42	1.18	1.04	1.00	1.13
18/04/2026	536.47	1.99	8.70	4.18	2.02	1.13	2.80	1.67	2.99	2.13	0.61	2.57	1.50	2.93	7.66	2.76	1.58	0.56	1.40	0.98	0.94	0.86	1.05
19/04/2026	536.88	2.06	8.60	4.16	2.03	1.13	2.76	1.67	2.95	2.19	0.63	2.54	1.46	2.90	7.71	2.86	1.62	0.60	1.38	1.08	0.85	0.68	0.83
20/04/2026	537.15	2.31	8.74	4.16	2.03	1.13	2.68	1.64	2.98	2.18	0.63	2.54	1.46	2.88	7.73	2.96	1.90	0.88	1.36	1.02	0.76	0.30	0.03
<b>Flood level</b>		<b>12.80</b>	<b>18.00</b>	<b>16.00</b>	<b>12.50</b>	<b>12.00</b>	<b>14.50</b>	<b>12.50</b>	<b>14.00</b>	<b>12.50</b>	<b>13.00</b>	<b>14.50</b>	<b>12.00</b>	<b>12.00</b>	<b>23.00</b>	<b>16.20</b>	<b>12.00</b>	<b>11.00</b>	<b>7.90</b>	<b>8.00</b>	<b>10.00</b>	<b>4.50</b>	<b>4.00</b>

Table A2: Weekly observed rainfall

2026	Jinghong	Chiang Saen	Luang Prabang	Chiang Khan	Vientiane	Nongkhai	Paksane	Nakhon Phanom	Thakhek	Mukdahan	Savannakhet	Khong Chiam	Pakse	Stung Treng	Kratie	Kompong Cham	Phnom Penh (Bassac)	Phnom Penh Port	Koh Khel	Neak Luong	Prek Kdam	Tan Chau	Chau Doc
14/04/2026	0	0	0	0	0	0	0	0	0	0	0	0	0	0	0	0	0	0	0	0	0	0	0
15/04/2026	0	0	0	0	0	0	0	0	0	0	0	0	0	0	0	4.5	0	0	0	0	0	0	0
16/04/2026	3	0	0	0	0	0	0	0	0	0	0	0	0	0	0	0	0	0	0	0	0	0	0
17/04/2026	1	1.7	0	0	0	0	0	0	0	0	0	0	0	0	0	0	0	0	0	0	0	0	0
18/04/2026	0	0	0	0	0	0	0	0	0	0	0	0	0	0	0	0	0	0	0	0	0	0	0
19/04/2026	0	5.9	0	0	0	0	0.3	0.4	0	19.5	28	9	0	0	0	0	0	0	0	0	0	0	0
20/04/2026	15	0	0	0	0	0	5.2	0.4	0	0	0	0	0	33.4	3	5.5	0	0	0	8.7	0	0	0
<b>Sum</b>	<b>19.0</b>	<b>7.6</b>	<b>0.0</b>	<b>0.0</b>	<b>0.0</b>	<b>0.0</b>	<b>5.5</b>	<b>0.8</b>	<b>0.0</b>	<b>19.5</b>	<b>28.0</b>	<b>9.0</b>	<b>0.0</b>	<b>0.0</b>	<b>33.4</b>	<b>7.5</b>	<b>5.5</b>	<b>0.0</b>	<b>0.0</b>	<b>8.7</b>	<b>0.0</b>	<b>0.0</b>	<b>0.0</b>



## Mekong River Commission Secretariat

P. O. Box 6101, 184 Fa Ngoum Road, Unit 18 Ban Sithane Neua, Sikhottabong District, Vientiane 01000, Lao PDR  
Tel: +856 21 263 263. Fax: +856 21 263 264 [www.mrcmekong.org](http://www.mrcmekong.org)

© Mekong River Commission 2025